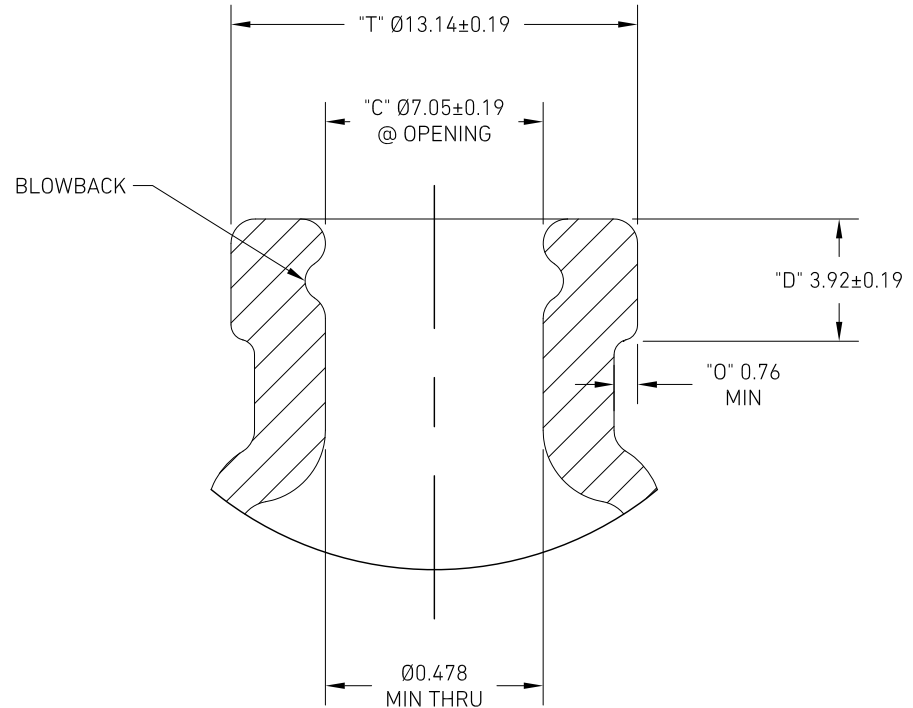
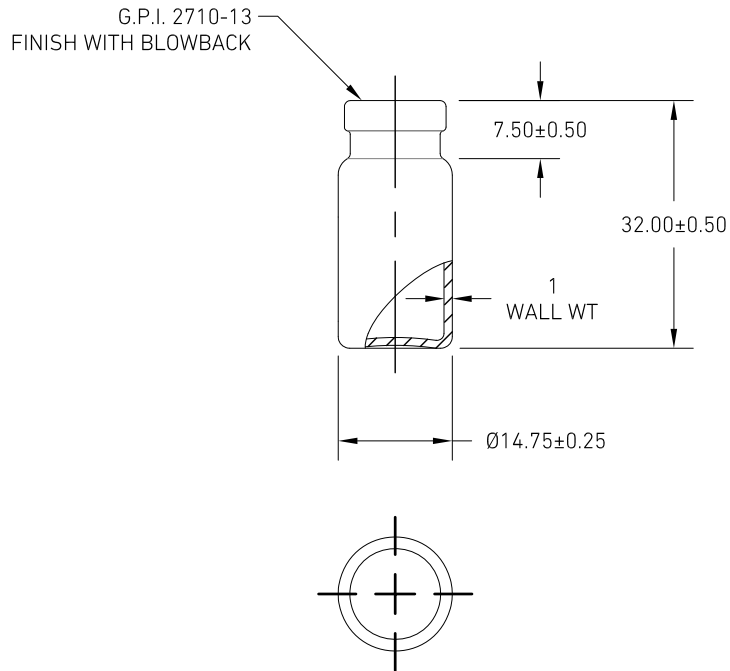


NOTES:

- VIAL MUST MEET THE REQUIREMENTS OF THE USP <660> COMPLIANCE.

REV	DESCRIPTION OF CHANGE	DRAWN BY	DATE	ECN
-	INITIAL RELEASE	HK	02/03/22	N/A



FINISH DETAIL  
4:1

1	1	TYPE I AMBER BORO GLASS, 51 EXP AS PER ASTM E438 - SEE NOTE 1		
ITEM	QTY.	MATERIAL: DESCRIPTION AND SPECIFICATIONS		
		TITLE: <b>2 ML VIAL, SERUM, TYPE I AMB GLASS</b>		
ITEM NUMBER: <b>223693</b>		DRAWING NUMBER: <b>CSD-223693</b>	DRAWN BY: <b>TJ</b>	DRAWN DATE: <b>02/09/06</b>
SAP NUMBER: <b>223693</b>		OLD MATERIAL NUMBER: <b>N/A</b>	SHEET SIZE: <b>A</b>	SHEET NUMBER: <b>1 OF 1</b>
			SHEET SCALE: <b>2:1</b>	

THIS CONFIDENTIAL AND PROPRIETARY DRAWING AND THE INFORMATION IN IT ARE THE EXCLUSIVE PROPERTY OF DWK LIFE SCIENCES. IT IS PROVIDED WITH THE UNDERSTANDING AND INTENTION THAT NOTHING CONTAINED HEREIN WILL BE REPRODUCED OR DISCLOSED TO THIRD PARTIES WITHOUT THE PRIOR EXPRESS WRITTEN CONSENT OF DWK LIFE SCIENCES.

ELECTRONIC OR PAPER COPIES OF THIS PRINT OUTSIDE OF DWK LIFE SCIENCES ARE UNCONTROLLED AND ARE FOR REFERENCE ONLY UNLESS OTHERWISE STAMPED.

**TOLERANCES**  
DIMENSIONS IN  
MILLIMETERS  
UNLESS SPECIFIED

X  $\pm 2\text{mm}$   
X.X  $\pm 0.5\text{mm}$   
X.XX  $\pm 0.15\text{mm}$

